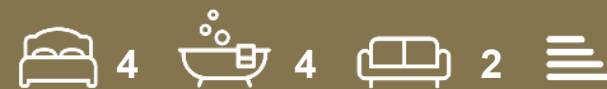




GUILDCREST ESTATES



**Plot 19 3 Ellington Mews  
Manston, Ramsgate CT12 5NF**





GUILDCREST ESTATES

**3 Ellington Mews  
Manston, Ramsgate, CT12  
5NF  
Prices from £585,000**

**\*\*Reserve Now\*\***

Last few remaining

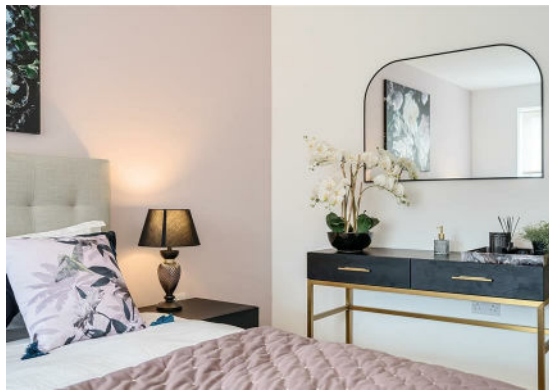
Imagine coming home to this magnificent 4 bedroom detached property with a modern, light, spacious interior. The Stirling offers modern and luxurious living.

The hallway is laid with luxury vinyl tile, with doors off to a large downstairs cupboard, study, cloakroom, living room and the kitchen diner.

The cloakroom is fitted with white sanitary ware and a sleek wall hung unit with basin.

The living room has large windows and French doors to allow natural light to flood in, making the space the perfect environment to relax. The high quality carpets give a warm and comfortable feel throughout the large space.

In the kitchen and diner you will find an exclusively designed, fitted kitchen, with integrated appliances, such as a fridge and freezer and dishwasher as well as a built in double Neff oven. The kitchen is completed with a high quality quartz





worktops. The open plan kitchen and diner is a great area for hosting guests and making the most of family meal times. Attached to the kitchen is the utility room with the same units, along with space for a washing machine and tumble dryer and side access to the garden.

Upstairs, you will find the master bedroom which is more like a luxury hotel suite. The large windows create a light and airy room, making it an ideal space for relaxation. The en-suite that follows on, is fully tiled with the highest quality sanitary ware with a luxury heated towel rail.

Bedroom two, three and four are double bedrooms with bedroom four being a smaller double. This means all living in the home have great sized rooms. The family bathroom is also fully tiled with a large bath tub and separate shower cubicle. Both bathrooms have mirrors with LED lights within, providing you with Hollywood glamour.

In the garden, you will find a generously paved area and secure boundaries so you can enjoy the summer months in the comfort of your own garden.

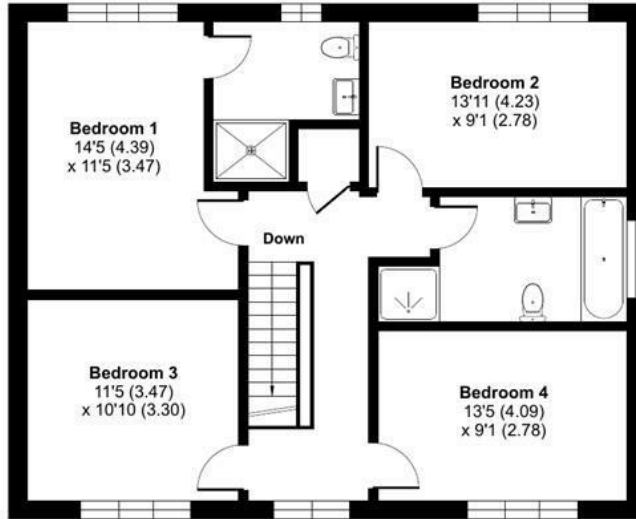


# St Stephens Park Road, Ramsgate, CT12

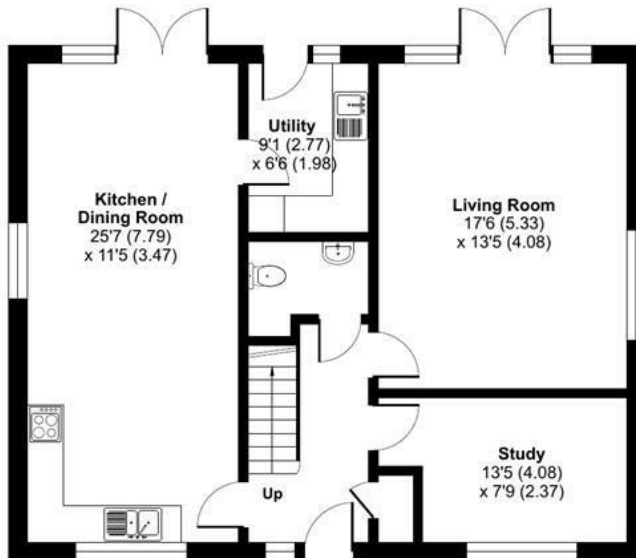
For identification only - Not to scale



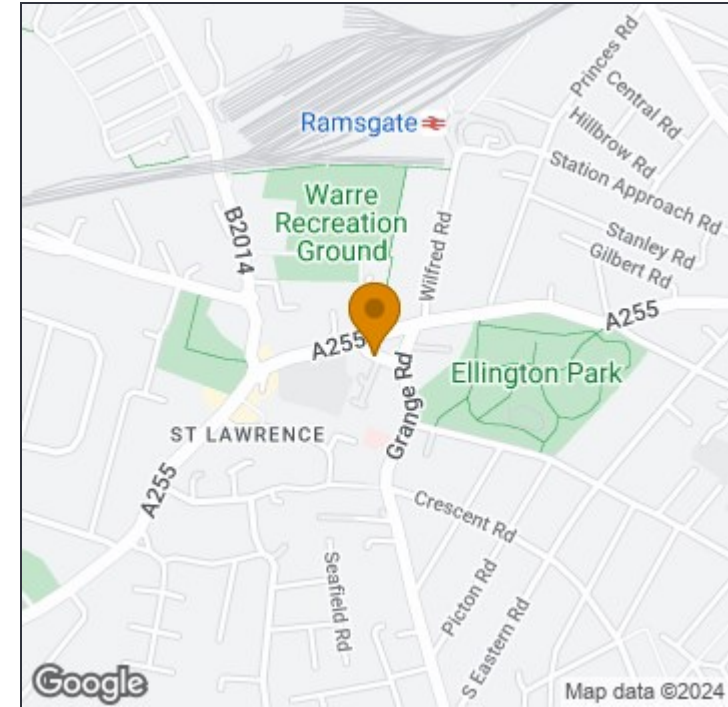
GUILDCREST ESTATES



FIRST FLOOR



GROUND FLOOR



### Disclaimer

These particulars, whilst believed to be accurate are set out as a general outline only for guidance and do not constitute any part of an offer or contract. Intending purchasers should not rely on them as statements of representation of fact, but must satisfy themselves by inspection or otherwise as to their accuracy. No person in this firm's employment has the authority to make or give any representation or warranty in respect of the property.



This floor plan was constructed using measurements provided to © nchecom 2023 by a third party. Produced for Guildcrest Estates Ltd. REF: 962981

### Manston

The Sales Suite, Office 4 Maple Leaf Manston  
Business Park, Ramsgate, Kent, CT12 5GJ

T: 01843 272 200

[sales@guildcrestestates.co.uk](mailto:sales@guildcrestestates.co.uk)

<https://www.guildcrestestates.co.uk>