

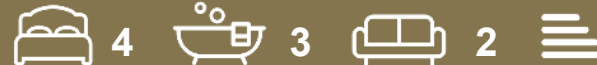


GUILDCREST ESTATES



## The Thorndon St Stephens Park

Manston CT12 5ES





GUILDCREST ESTATES

**St Stephens Park  
, Manston, CT12 5ES  
£599,950**

**\*\*Reserve Now\*\***

Last few remaining

THE THORNDON

This grand, new 4 bedroom detached property invites you to discover a luxurious lifestyle.

The light and spacious entrance hall laid with exclusive Moduleo LVT, provides access to the kitchen/diner, cloakroom and reception room.

In the kitchen you will find an exclusively designed kitchen, consisting of an integrated fridge and freezer, paired with a 19 bottle wine cooler. All kitchen counters are accompanied by quartz worktops. The kitchen/diner provides a light and airy environment, perfect for family meal times or entertaining guests.

Leading on from the kitchen/diner, is the utility room with space for a washing machine and tumble dryer. The utility room has the same kitchenware and quartz worktop as the kitchen, giving a





continuous sleek look.

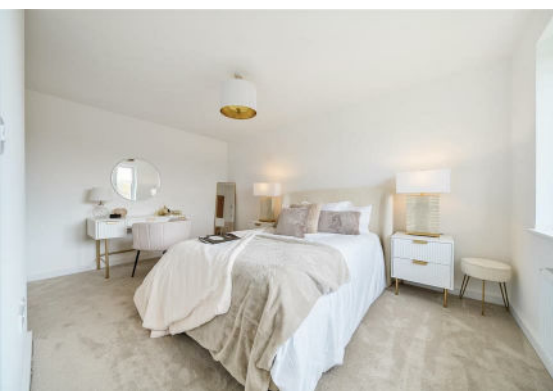
The living room oozes luxury with the highest quality carpets to offer you comfort 24/7. The large window and double doors allow for vast amounts of light to stream in to the space.

Upstairs, you will find 4 bedrooms with the large and light primary bedroom with an en-suite bathroom and separate family bathroom. All bathrooms come with stunning sanitaryware in white as well as a heated towel rail for a warm and cozy feel. In the family bathroom you will find a free standing bath with a separate shower cubicle. The bathrooms are fully tiled with a beautiful hand selected premium range.

The spacious primary bedroom overlooks the garden through large windows welcoming light in. Similarly, the second, third and fourth bedroom are light and airy to make for a fresh environment to relax.

The front garden is fully landscaped and the rear garden is laid to turf with a large patio area, made of Indian Sandstone. The secure back garden space is perfect for summer days, soaking up the sun and relaxing. This property boasts a single garage and driveway for 2 vehicles.

This luxurious home will prove the perfect space to live and it is the perfect property to call home.

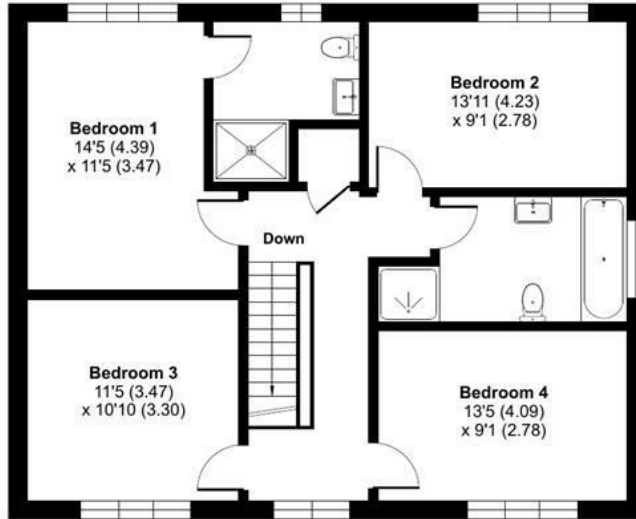


# St Stephens Park Road, Ramsgate, CT12

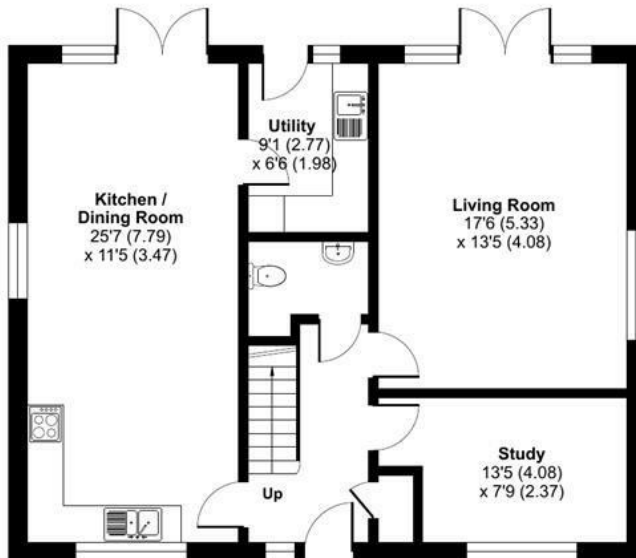
For identification only - Not to scale



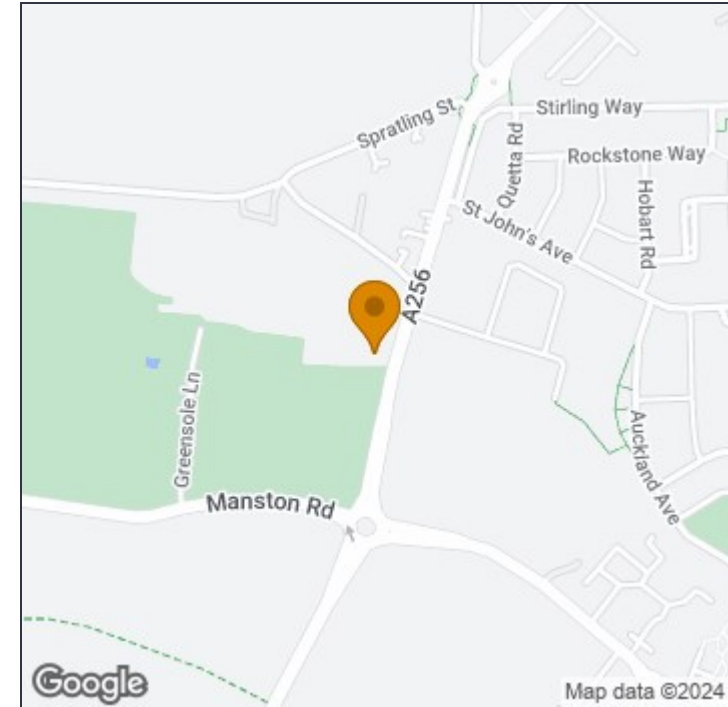
GUILDCREST ESTATES



FIRST FLOOR



GROUND FLOOR



### Disclaimer

These particulars, whilst believed to be accurate are set out as a general outline only for guidance and do not constitute any part of an offer or contract. Intending purchasers should not rely on them as statements of representation of fact, but must satisfy themselves by inspection or otherwise as to their accuracy. No person in this firm's employment has the authority to make or give any representation or warranty in respect of the property.



This floor plan was constructed using measurements provided to © nchecom 2023 by a third party. Produced for Guildcrest Estates Ltd. REF: 962981

### Manston

The Sales Suite, Office 4 Maple Leaf Manston  
Business Park, Ramsgate, Kent, CT12 5GJ

T: 01843 272 200

[sales@guildcrestestates.co.uk](mailto:sales@guildcrestestates.co.uk)

<https://www.guildcrestestates.co.uk>