

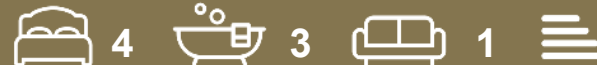


GUILDCREST ESTATES



St Stephen's Park St
Stephen's Park

Manston CT12 5ES





GUILDCREST ESTATES

**St Stephen's Park
, Manston, CT12 5ES
Prices from £635,000**

****Reserve Now****

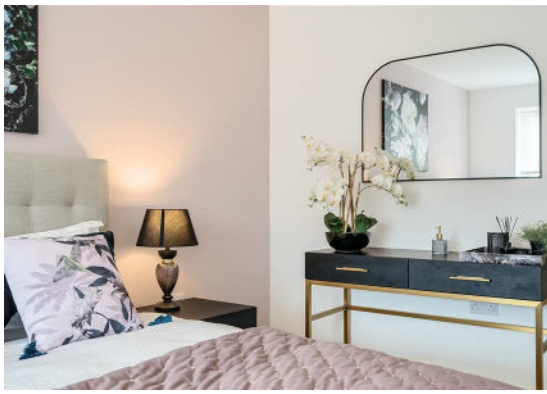
Last few remaining

The Mulvihill

A stunning and impressive detached, 4 bedroom home, featuring a light, spacious and modern interior.

As you enter this large property, you step into a bright and light entrance hall which leads to the spacious open plan kitchen/diner, downstairs cloakroom, utility room and separate lounge. Double doors between the lounge and the dining area allow for further open plan living. On the first floor are 4 large bedrooms, 2 of which have en-suites, and the family bathroom.

Enjoy the large rear garden laid to turf with an Indian Sandstone patio, a fully landscaped front garden and a detached double garage with driveway for 2 vehicles.





All-inclusive, this home is ready for you to move in to, with NO ADDITIONAL COSTS.

This home comes complete with moduleo LVT flooring and luxurious carpet throughout, oak internal doors and a bespoke, fully fitted Roma kitchen with integrated appliances and quartz worktops.

The fully tiled bathroom and en-suites feature modern white sanitaryware, including free standing baths, separate showers beautiful vanity units. Also included are illuminated mirrors and heated towel rails.

With everything taken care of for you, this new, energy-efficient house gives you the perfect home to start creating new memories. So why wait?

Make your move today and start enjoying your new life on the East Kent coast at St Stephens Park, in this luxurious new home.

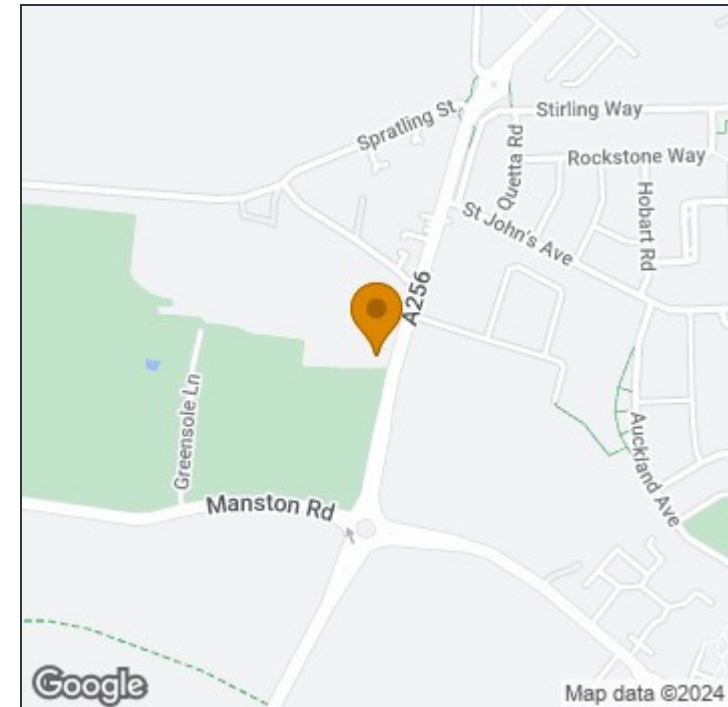


St Stephens Park Road, Ramsgate, CT12

For identification only - Not to scale



GUILDCREST ESTATES



Disclaimer

These particulars, whilst believed to be accurate are set out as a general outline only for guidance and do not constitute any part of an offer or contract. Intending purchasers should not rely on them as statements of representation of fact, but must satisfy themselves by inspection or otherwise as to their accuracy. No person in this firm's employment has the authority to make or give any representation or warranty in respect of the property.



This floor plan was constructed using measurements provided to © nchecon 2023 by a third party. Produced for Guildcrest Estates Ltd. REF: 962977

Manston

The Sales Suite, Office 4 Maple Leaf Manston
Business Park, Ramsgate, Kent, CT12 5GJ

T: 01843 272 200

sales@guildcrestestates.co.uk

<https://www.guildcrestestates.co.uk>