



GUILDCREST ESTATES



10 St Stephens Park
Ramsgate CT12 5NE

 3  2  1  B



GUILDCREST ESTATES

**St Stephens Park
Ramsgate, CT12 5NE
£1,700 Per month**

Guildcrest Estates are proud to present to the rental market, this well appointed new build home.

Situated on a popular development within Ramsgate, St Stephens Park is close to all amenities, supermarkets, shops, restaurants, bars, entertainment venues including a cinema and a casino. Only a few miles from Blue Flag sandy beaches, this is in a fabulous location.

THE PENNINGTON is a stunning 3 bedroom semi-detached home, with a light, modern interior.

Stepping into this beautiful new home, you enter into the light and spacious entrance hall which leads to the open plan kitchen/diner, with double doors to the separate lounge and downstairs cloakroom. Upstairs you will find 3 bedrooms, the master bedroom with an ensuite and the family bathroom.

This property boasts a landscaped front garden, a rear garden laid to lawn with





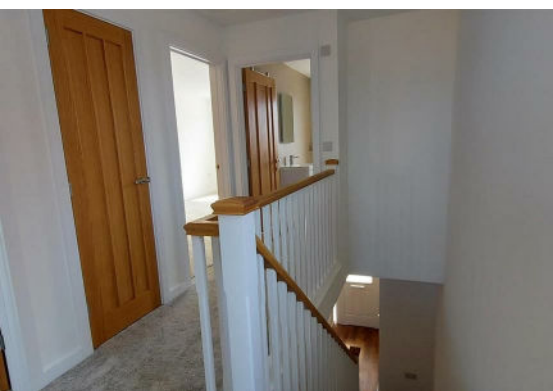
an Indian Sandstone patio, single garage and driveway for 2 vehicles.

This home comes complete with moduleo LVT flooring and luxurious carpet throughout, oak internal doors and a bespoke, fully fitted Roma kitchen with integrated appliances and quartz worktops.

The fully tiled bathroom and en-suite feature modern white sanitaryware, including a free standing bath, separate showers, vanity units, illuminated mirrors and heated towel rails.

With everything taken care of for you, this new, energy-efficient house is ready to move into. So why wait? Book a viewing today.

£1700 PCM
£1961 Deposit
Council Tax Band D

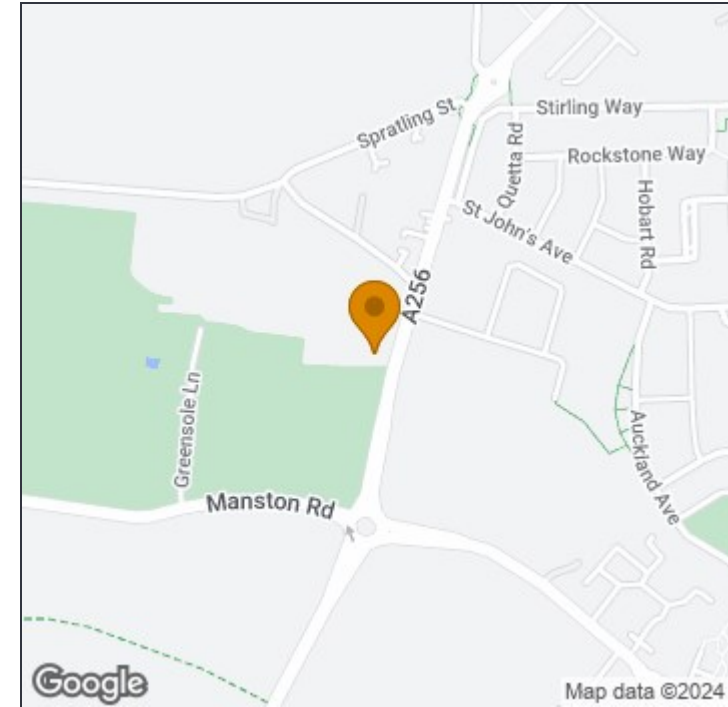


St Stephens Park Road, Ramsgate, CT12

For identification only - Not to scale



GUILDCREST ESTATES



Disclaimer

These particulars, whilst believed to be accurate are set out as a general outline only for guidance and do not constitute any part of an offer or contract. Intending purchasers should not rely on them as statements of representation of fact, but must satisfy themselves by inspection or otherwise as to their accuracy. No person in this firm's employment has the authority to make or give any representation or warranty in respect of the property.



This floor plan was constructed using measurements provided to © nichecom 2023 by a third party. Produced for Guildcrest Estates Ltd. REF: 962965

Manston

The Sales Suite, Office 4 Maple Leaf Manston
Business Park, Ramsgate, Kent, CT12 5GJ

T: 01843 272 200

sales@guildcrestestates.co.uk

<https://www.guildcrestestates.co.uk>