



GUILDCREST ESTATES



Plot 2 3 Leverick Place, Ash CT3 2DF



4



2



1



3 Leverick Place, Ash CT3 2DF

£485,000

The Brooke is a detached 4 bedroom family home with traditional Kent weatherboarding, set in the picturesque village of Ash.

As you enter this stunning new home, you step into a light spacious entrance hall which leads to a generously sized dual aspect lounge with patio doors overlooking the garden, Cloakroom/WC, storage cupboards and an spacious open plan, high quality kitchen/diner, with bespoke fitted cupboards, beautiful quartz worktops and integrated appliances, including a fridge, freezer, dishwasher, oven and hob with patio doors leading out the garden.

Throughout the hall, cloakroom and kitchen/diner you will find LVT Moduleo flooring with luxury fitted carpets throughout the rest of the home.

On the first floor, you will find 4 double bedrooms, the primary bedroom with an ensuite and a luxurious family bathroom, both fully tiled and fitted with modern contemporary, bathroom suites, stylish sanitaryware and heated towel rails.

This home has a good size rear garden, laid to patio and turf and has a landscaped front garden and off street parking, and solar panels on the roof.

The village of Ash is situated in Kent, just a short distance from the historic market town of Sandwich and the world recognised Cathedral City of Canterbury. The village has an abundance of local amenities. There are shops, a doctor's surgery, dentist, hairdressers, farm shops, sports clubs a public house and restaurant.

Sandwich train station has a direct link to London Charing Cross. The motorway links are good, A257 (Ash Bypass) is approximately 10 miles away from the A2 which connects to M2. The Port of Dover and Eurotunnel are approx 30 minutes drive.

Freehold

Mains, electricity, gas, sewer, water and has gas central heating.

Fixed wireless

Service Charge - £281.43 per annum



GUILDCREST ESTATES

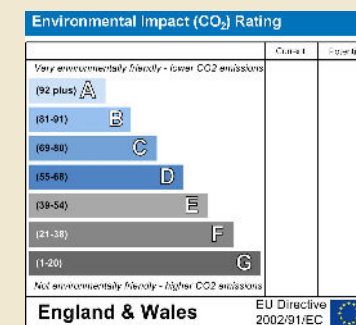
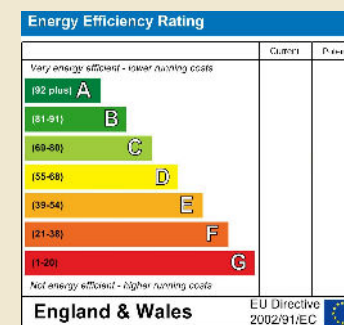
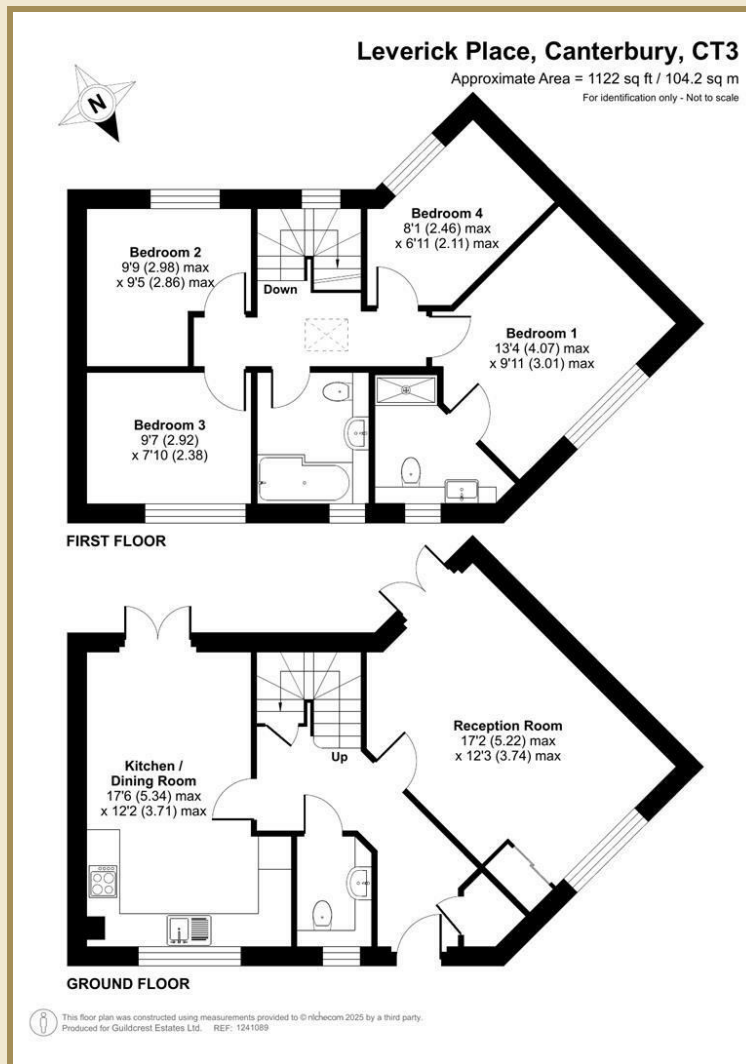
Key Features

- VILLAGE LOCATION
- DETACHED NEW BUILD
- LOUNGE
- KITCHEN/DINER
- FULLY TILED BATHROOM
- PRIMARY WITH EN SUITE
- 4 DOUBLE BEDROOMS
- DRIVEWAY FOR 2 VEHICLES
- SOLAR PANELS
- SERVICE CHARGE £281.43 P.A

Important Information

Freehold
House - Detached
1122.00 sq ft
Council Tax Band New Build
EPC Rating

£485,000



01843 272200 www.guildcrestestates.co.uk

1 The Laurels, Manston Business Park, Ramsgate, Kent CT12 5NQ



Guildcrest Estates Ltd. Registered Office 1 Percy Road, Broadstairs, Kent CT10 3LB Company Number: 13135084 Registered in England & Wales | VAT Number: 374 4288 71

Disclaimer These particulars, whilst believed to be accurate are set out as a general outline only for guidance and do not constitute any part of an offer or contract. Intending purchasers should not rely on them as statements of representation of fact, but must satisfy themselves by inspection or otherwise as to their accuracy. No person in this firm's employment has the authority to make or give any representation or warranty in respect of the property.