



GUILDCREST ESTATES



20 New Street, Ash CT3 2BH



3



1



2

New Street, Ash CT3 2BH

£350,000

Located in the extremely popular semi-rural area of New Street, Canterbury, this stunning mid-terrace townhouse offers a perfect blend of modern living and comfort. Built in 2004, the property boasts three spacious double bedrooms, making it an ideal home for families or those seeking extra space.

Upon entering, you are greeted by a lovely fitted kitchen, complete with some integrated appliances that make cooking a delight. The generous lounge provides a welcoming atmosphere and seamlessly flows into a bright conservatory, perfect for enjoying the natural light and views of the garden. Additionally, the convenience of a downstairs WC adds to the practicality of this well-designed home.

The low-maintenance garden is a true gem, offering a peaceful outdoor space with rear access, ideal for relaxing or entertaining guests. For those with vehicles, the property includes parking for two vehicles ensuring ease and convenience.

The idyllic location of Ash Village offers a peaceful retreat from the hustle and bustle of city life, while being close to the vibrant city of Canterbury. Surrounded by the beauty of Kentish countryside, you'll find yourself immersed in a picturesque setting. Additionally, the good bus links make





commuting a breeze for those who need to travel.

Council Tax Band C

Service Charge is approx £110 PA

Freehold

Mains water, sewer, electricity and gas with gas central heating

Fixed wireless broadband



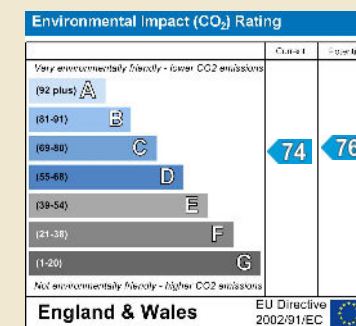
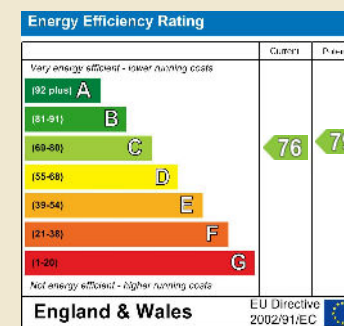
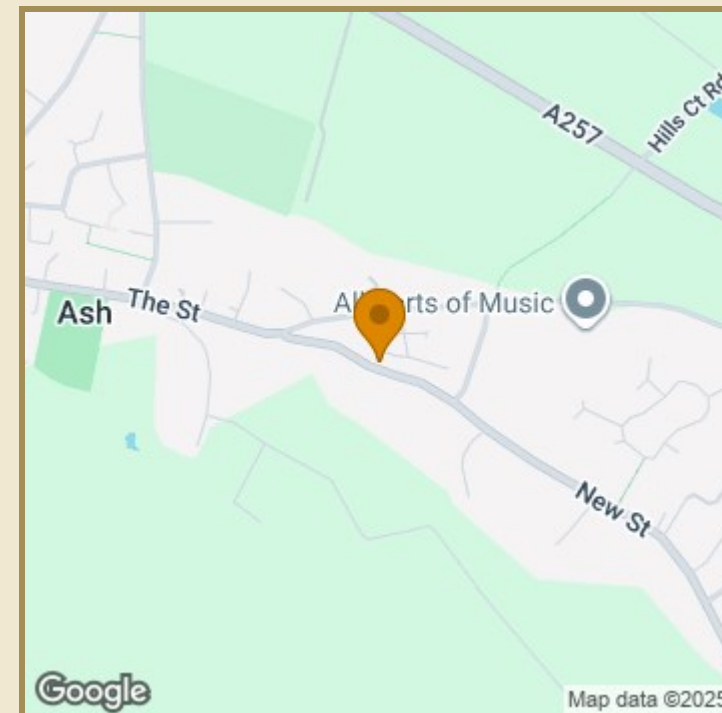
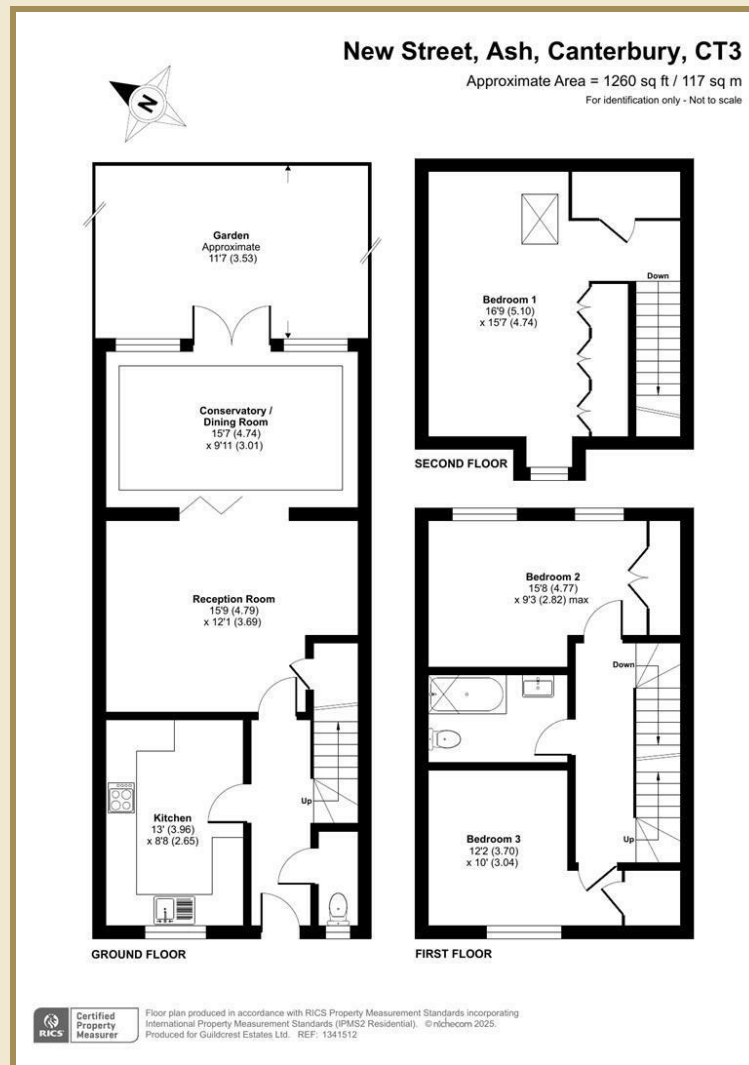
Key Features

- Stunning townhouse
- 3 double bedrooms
- Downstairs WC
- Beautiful fitted kitchen
- Good size lounge leading to conservatory
- Parking for 2 vehicles
- Semi rural location
- Council Tax Band C

Important Information

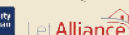
Freehold
 House - Mid Terrace
 1260.00 sq ft
 Council Tax Band C
 EPC Rating C

£350,000



01843 272200 www.guildcrestestates.co.uk

1 The Laurels, Manston Business Park, Ramsgate, Kent CT12 5NQ



Disclaimer These particulars, whilst believed to be accurate are set out as a general outline only for guidance and do not constitute any part of an offer or contract. Intending purchasers should not rely on them as statements of representation of fact, but must satisfy themselves by inspection or otherwise as to their accuracy. No person in this firm's employment has the authority to make or give any representation or warranty in respect of the property.