



GUILDCREST ESTATES



GUILDCREST
ESTATES
We're with you all the way
FOR SALE
01843 272200
www.guilcrest.co.uk

22 Sandwich Road, Ash, Canterbury CT3 2AF





GUILDCREST ESTATES

Sandwich Road, Ash, Canterbury
CT3 2AF

Asking price £620,000

Looking for a 4 bedroom home in a beautiful countryside location, The Guilton has everything you could wish for. This stunning detached family home sitting on a large plot, set in the picturesque village of Ash.

As you enter this stunning home, you step into a light spacious entrance hall which leads to a generously sized lounge with wood burning stove & patio doors overlooking the garden. There's a front facing study/playroom, cloakroom/WC and a spacious open plan, bespoke kitchen/diner, with a peninsula, beautiful quartz worktops and integrated appliances, including a fridge, freezer, dishwasher, oven & hob, with patio doors leading out the garden. The Utility has fitted cupboards, space for a washing machine & tumble dryer along with access into the garden.

In the hall, cloakroom and the kitchen/diner you will find LVT Moduleo flooring with luxury fitted carpets throughout the rest of the home.

On the first floor, you will find 4 double bedrooms and a luxurious, fully tiled family bathroom. The primary bedroom has a fully tiled ensuite. Both bathrooms are fitted with modern, contemporary, bathroom suites and heated towel rails.





This home has a generous rear garden, laid to patio and turf with landscaped front garden. Parking for 2 vehicles, an integrated garage with light and power, electric car charging point, and solar panels.

The village of Ash is situated in Kent, just a short distance from the historic market town of Sandwich and the world recognised Cathedral City of Canterbury. The village has an abundance of local amenities. With shops, restaurants, doctors and a pub.

Sandwich train station has a direct link to London Charing Cross. The motorway links are good, A257 (Ash Bypass) is approximately 10 miles away from the A2 which connects to M2. The Port of Dover and Eurotunnel are approx 30 minutes drive.

Freehold
Mains, electricity, gas, sewer, water and has gas central heating





GUILDCREST ESTATES

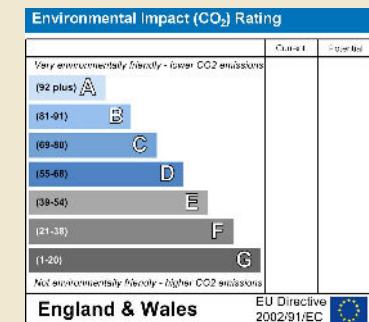
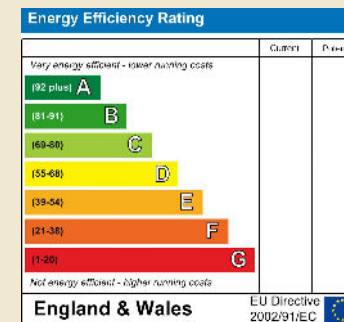
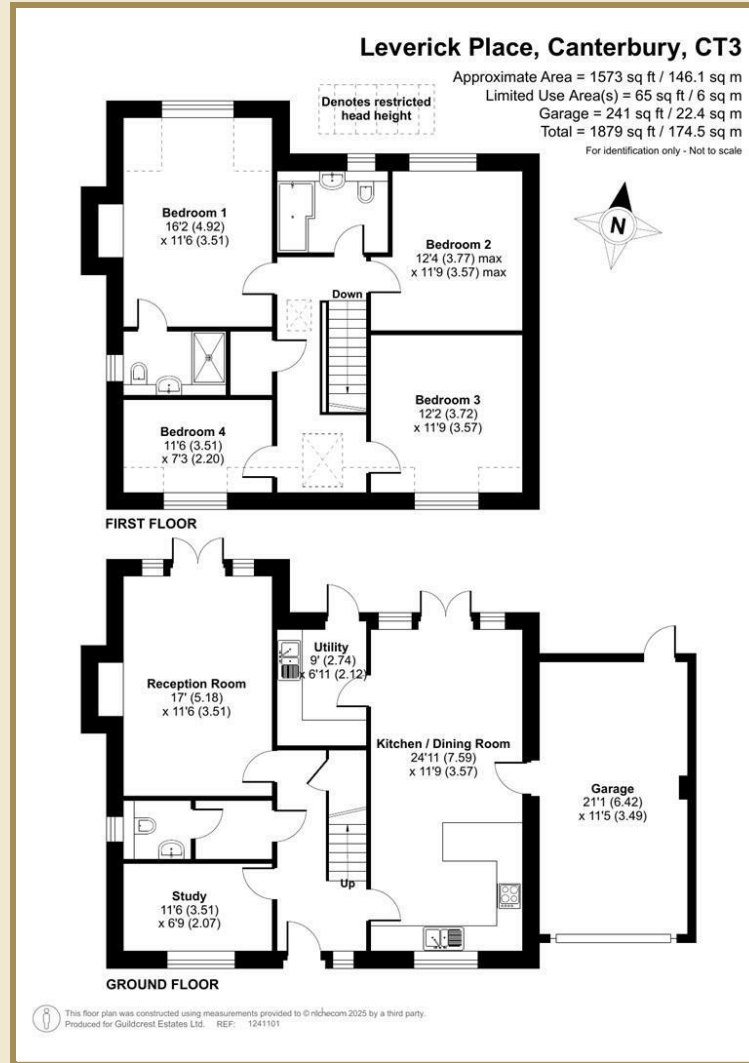
Key Features

- DETACHED NEW BUILD
- 4 BEDROOMS
- LARGE KITCHEN / DINER AND UTILITY
- LOUNGE WITH WOOD BURNER
- STUDY/PLAYROOM
- MASTER BEDROOM WITH ENSUITE
- LARGE GARDEN WITH PATIO AREA
- SOLAR PANELS
- GARAGE & GATED DRIVEWAY
- VILLAGE LOCATION

Important Information

Freehold
House - Detached
1638.00 sq ft
Council Tax Band New Build
EPC Rating

£620,000



01227 696000 www.guildcrestestates.co.uk

24 Lower Bridge Street, Canterbury, Kent CT1 2LG



Guildcrest Estates Ltd. Registered Office 1 Percy Road, Broadstairs, Kent CT10 3LB Company Number: 13135084 Registered In England & Wales | VAT Number: 34428871

Disclaimer These particulars, whilst believed to be accurate are set out as a general outline only for guidance and do not constitute any part of an offer or contract. Intending purchasers should not rely on them as statements of representation of fact, but must satisfy themselves by inspection or otherwise as to their accuracy. No person in this firm's employment has the authority to make or give any representation or warranty in respect of the property.