



GUILDCREST ESTATES



5 White House Farm Court Easole Street, Nonington, Dover CT15 4NJ





GUILDCREST ESTATES

Easole Street, Nonington, Dover  
CT15 4NJ

**Guide price £325,000**

**\*\*\*GUIDE PRICE £325,000 - £350,000\*\*\***

Located in the charming village of Nonington, this delightful three bedroom barn conversion offers a unique blend of character and modern living. The property is situated on Easole Street, within a lovely small community that enhances the appeal of village life.

As you enter, you will be greeted by the distinctive features that make this home truly special. The mezzanine on the top floor provides an airy and spacious feel, perfect for relaxation or as a creative space. Each bedroom is thoughtfully designed, ensuring comfort and warmth throughout.

The property boasts a garage, providing ample storage or parking space, while the easy to maintain rear garden offers a tranquil outdoor retreat, ideal for enjoying sunny afternoons or hosting gatherings with friends and family.

With communal parking available, convenience is at your doorstep. This barn conversion is not just a house, it is a home filled with character, set in a picturesque village that invites a sense of community and belonging. If you are seeking a property that combines charm with practicality, this is an opportunity not to be missed.





**Kitchen**

9'7 x 7'1 (2.92 x 2.17)

**Dining Room**

26'0 x 12'8 (7.93 x 3.85)

**Living Room**

26'1 x 16'0 (7.94 x 4.88)

**Mezzanine**

11'0 x 9'1 (3.35 x 2.76)

**Bedroom 3**

14'11 x 11'11 (4.54 x 3.64)

**Bedroom 1**

13'11 x 11'7 (4.23 x 3.54)

**Bedroom 2**

13'11 x 8'4 (4.23 x 2.55)

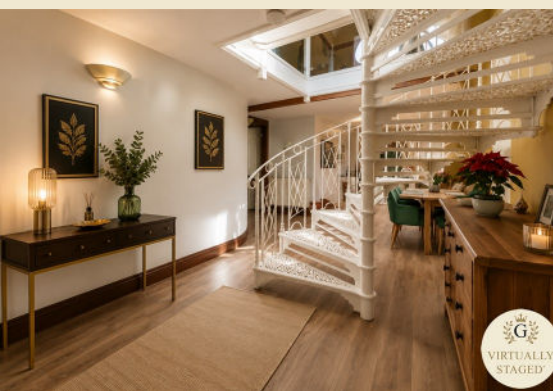
**Bathroom**

**Hallway**

**Rear Garden**

**Garage**

18'11 x 9'1 (5.76 x 2.76)





GUILDCREST ESTATES

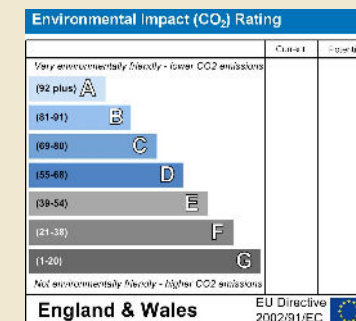
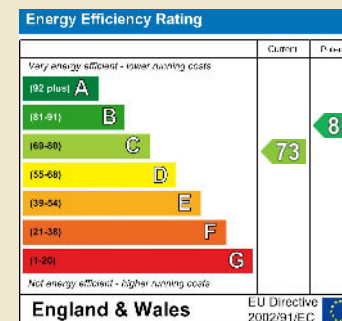
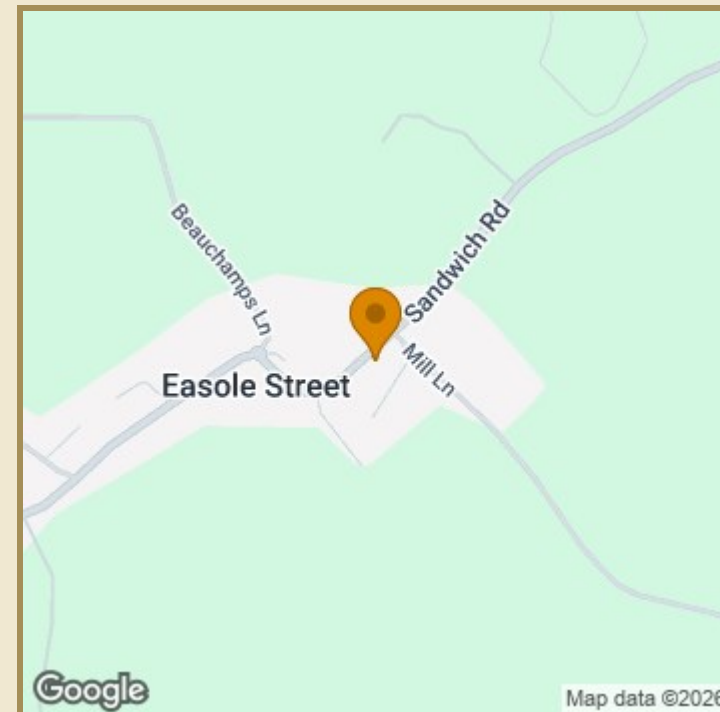
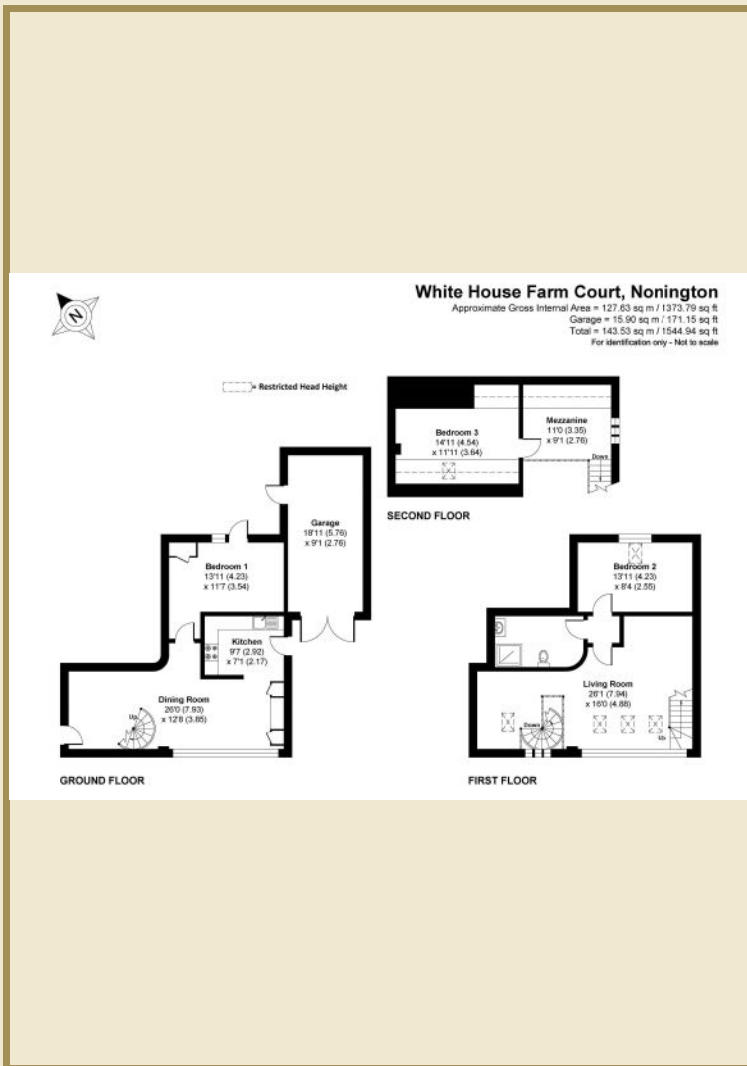
## Key Features

- 3 bedroom barn conversion
- Quirky character throughout
- Mezzanine with lots of charm
- Easy maintained rear garden
- Garage for secure parking
- Lovely village community
- Communal parking available
- Located in Easole Street
- Near Nonington, Dover
- Viewing highly recommended

## Important Information

Freehold  
House - Terraced  
1373.00 sq ft  
Council Tax Band  
EPC Rating C

£325,000



01227 696000 [www.guildcrestestates.co.uk](http://www.guildcrestestates.co.uk)

24 Lower Bridge Street, Canterbury, Kent CT1 2LG



Guildcrest Estates Ltd. Registered Office 1 Percy Road, Broadstairs, Kent CT10 3LB Company Number: 13135084 Registered In England & Wales | VAT Number: 34428871

**Disclaimer** These particulars, whilst believed to be accurate are set out as a general outline only for guidance and do not constitute any part of an offer or contract. Intending purchasers should not rely on them as statements of representation of fact, but must satisfy themselves by inspection or otherwise as to their accuracy. No person in this firm's employment has the authority to make or give any representation or warranty in respect of the property.