



GUILDCREST ESTATES



20 Crescent Road, Ramsgate CT11 9QX



5



2



1



GUILDCREST ESTATES

Crescent Road, Ramsgate CT11 9QX

£425,000

Centrally located on Crescent Road in the charming coastal town of Ramsgate, this substantial five-bedroom Victorian mid-terraced house is a splendid example of period architecture, boasting original features that add character and charm throughout. As you enter, you are greeted by a bright and spacious lounge, enhanced by large bay windows that flood the room with natural light. The original folding doors lead seamlessly into the dining room, creating an inviting space for family gatherings and entertaining guests.

The kitchen offers ample space and leads to a convenient utility area, as well as a downstairs shower room, perfect for busy family life. The property also features a tanked basement, currently utilised as a games room, providing additional versatile living space.

Arranged over the first and second floors, you will find five generously sized double bedrooms, each offering a comfortable retreat for family members or guests. The layout of the house ensures that there is plenty of room for everyone, making it ideal for larger families or those who enjoy hosting.

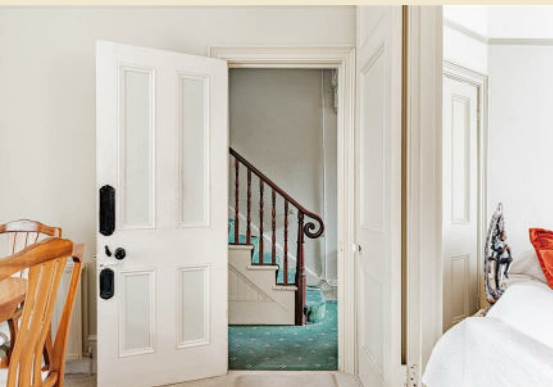
Step outside to discover a sunny and private rear garden, enclosed by a charming stone wall, providing a tranquil outdoor space for relaxation and recreation. This delightful





garden is perfect for summer barbecues or simply enjoying a quiet moment in the sun.

With its blend of original features and modern conveniences, this Victorian home is a rare find in Ramsgate, offering both style and functionality. It presents an excellent opportunity for those seeking a spacious family home in a desirable location.





GUILDCREST ESTATES

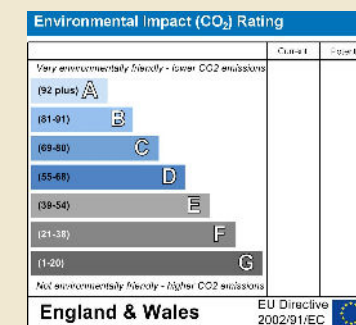
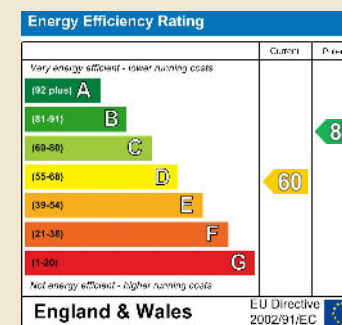
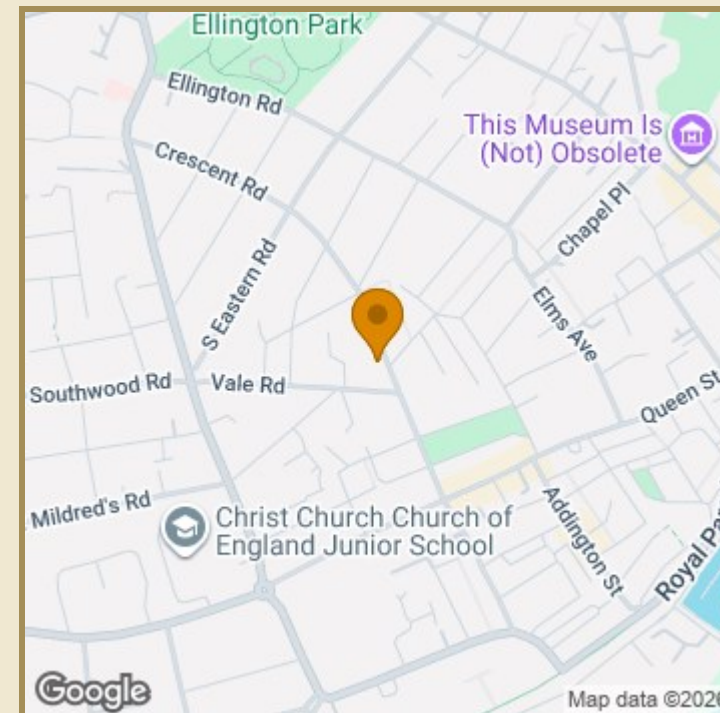
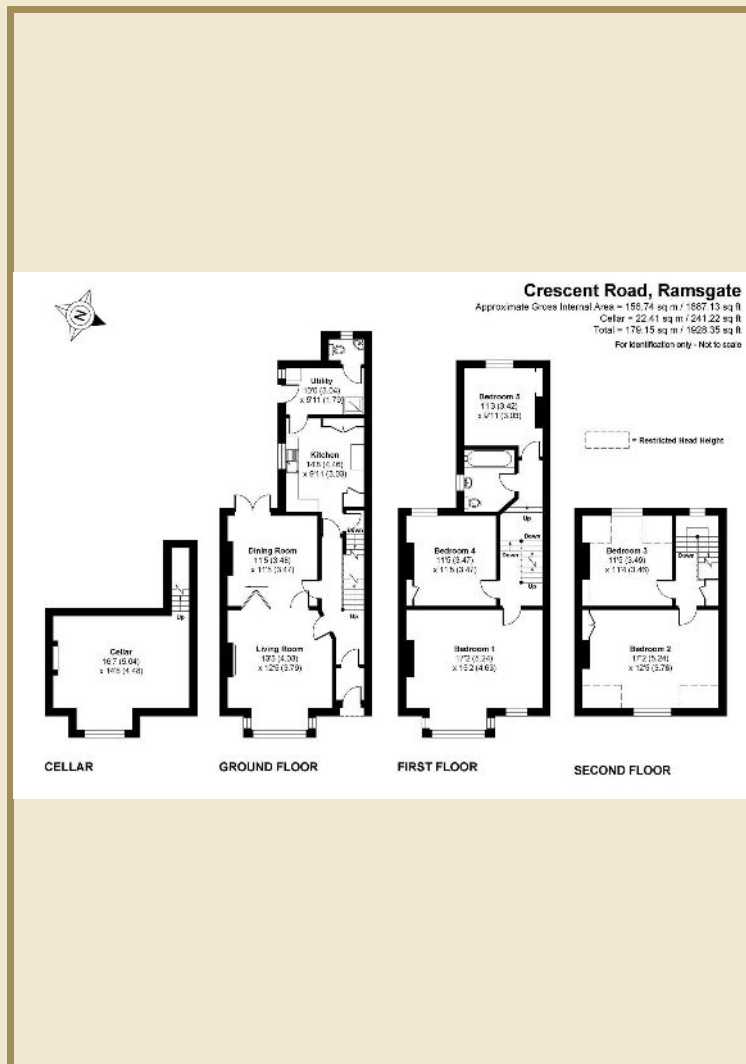
## Key Features

- Substantial five-bedroom Victorian mid-terraced house
- Boasting original features, character and charm throughout
- Bright and spacious lounge and dining room
- Generous kitchen with a utility area and downstairs shower room
- Tanked basement used as a games room
- Five generous double bedrooms and a family bathroom
- Sunny and private rear garden with a charming stone wall
- Great location close to amenities and seafront

## Important Information

Freehold  
House  
1928.00 sq ft  
Council Tax Band C  
EPC Rating D

£425,000



01843 272200 www.guilcrestestates.co.uk

1 The Laurels, Manston Business Park, Ramsgate, Kent CT12 5NQ



Guildcrest Estates Ltd. Registered Office 1 Percy Road, Broadstairs, Kent CT10 3LB Company Number: 13138084 Registered In England & Wales | VAT Number: 374 4288 71

**Disclaimer** These particulars, whilst believed to be accurate are set out as a general outline only for guidance and do not constitute any part of an offer or contract. Intending purchasers should not rely on them as statements of representation of fact, but must satisfy themselves by inspection or otherwise as to their accuracy. No person in this firm's employment has the authority to make or give any representation or warranty in respect of the property.