



GUILDCREST ESTATES



33 Richborough Close, Margate CT9 4FA





GUILDCREST ESTATES

**Richborough Close, Margate  
CT9 4FA**

**Asking price £299,950**

Welcome to this stunning three-bedroom end terrace home located on Richborough Close in the charming town of Margate. This modern property boasts a well-designed layout, perfect for families or those seeking a comfortable living space.

As you enter, you are greeted by a spacious reception room which offers a cosy retreat, perfect for relaxation after a long day this then flows seamlessly into a recently fitted kitchen and dining area, ideal for entertaining guests or enjoying family meals.

The property features three bedrooms, including a master suite complete with an en suite bathroom, providing a private sanctuary for the homeowners. Additionally, there is a well-appointed family bathroom, ensuring convenience for all residents.

Outside, you will find a great-sized garden, perfect for outdoor activities or simply enjoying the fresh air. The property also includes allocated parking adding to the ease of living in this delightful home.

Situated close to the Westwood Cross shopping centre, residents will benefit from a variety of shops, restaurants, and amenities just a short distance away. This location offers the perfect blend of suburban tranquility and





urban convenience.

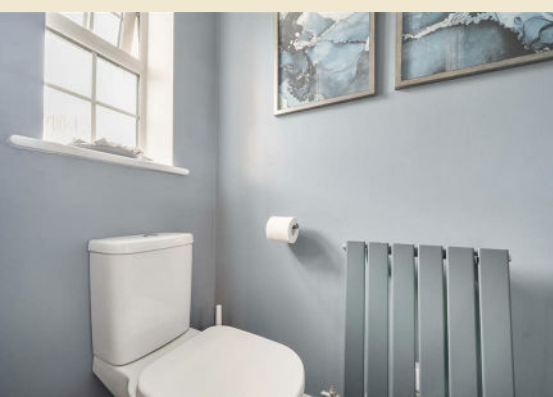
In summary, this modern end terrace home on Richborough Close is an excellent opportunity for those looking for a stylish and comfortable living space in Margate. Don't miss your chance to make this wonderful property your new home.

Council Tax Band C  
Service Charge is £250 PA

Freehold

Mains water, sewer, electricity and gas with gas central heating

Fixed wireless broadband





GUILDCREST ESTATES

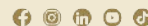
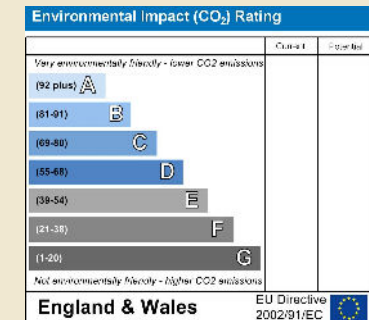
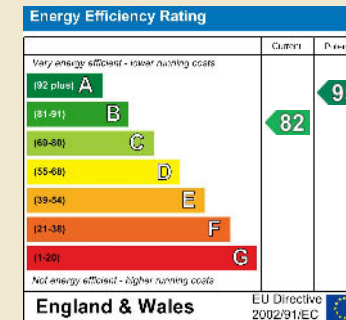
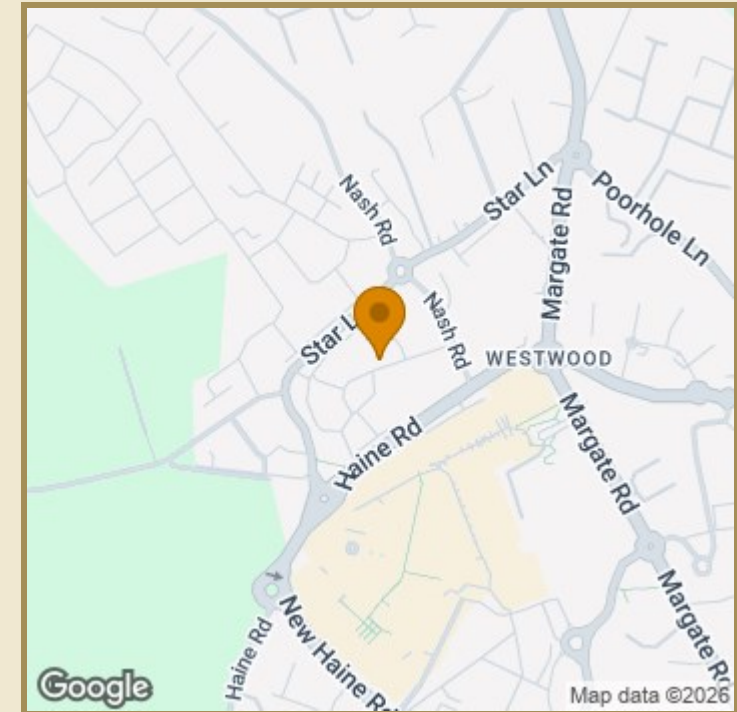
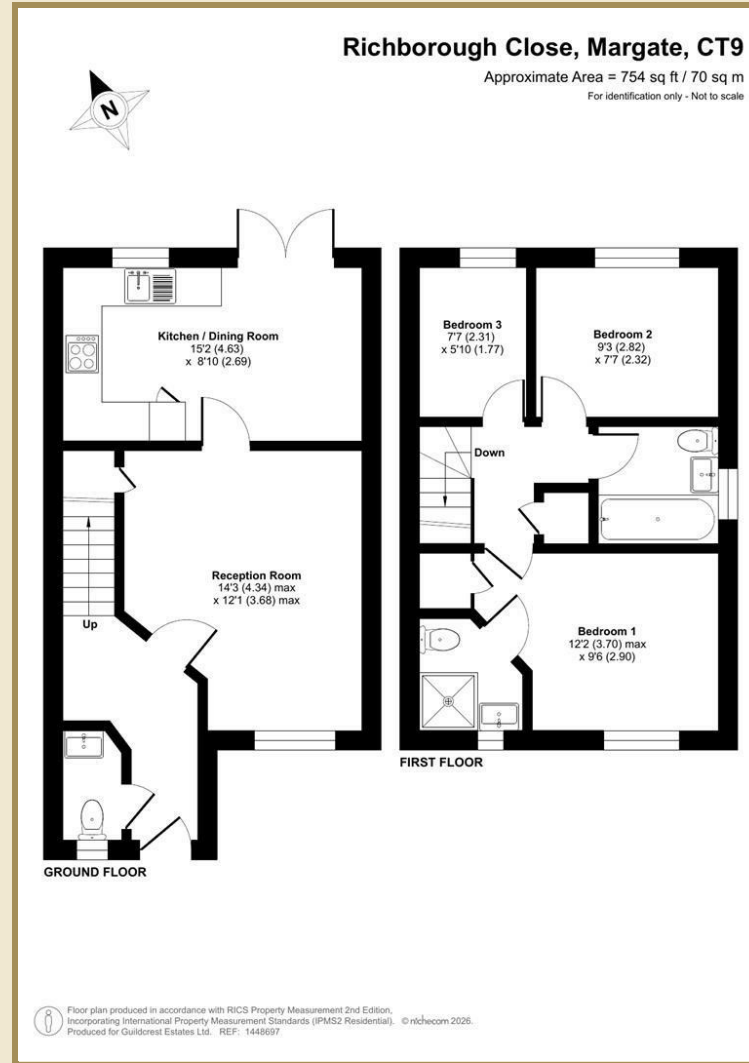
## Key Features

- Beautiful 3 bedroom end terrace home
- Lounge and recently fitted ultra modern kitchen
- En suite to master bedroom and family bathroom
- Downstairs WC
- Great size garden with side access
- Allocated parking space. Very sought after location
- Situated close to Westwood cross shopping center
- EPC rating B

## Important Information

Freehold  
House - End Terrace  
754.00 sq ft  
Council Tax Band C  
EPC Rating B

£299,950



01227 696000 [www.guildcrestestates.co.uk](http://www.guildcrestestates.co.uk)

24 Lower Bridge Street, Canterbury, Kent CT1 2LG



Guildcrest Estates Ltd. Registered Office 1 Percy Road, Broadstairs, Kent CT10 3LB Company Number: 13135084 Registered In England & Wales | VAT Number: 34428871

**Disclaimer** These particulars, whilst believed to be accurate are set out as a general outline only for guidance and do not constitute any part of an offer or contract. Intending purchasers should not rely on them as statements of representation of fact, but must satisfy themselves by inspection or otherwise as to their accuracy. No person in this firm's employment has the authority to make or give any representation or warranty in respect of the property.