



GUILDCREST ESTATES



16 Bishop Close, Margate CT9 4FP





GUILDCREST ESTATES

Bishop Close, Margate CT9 4FP

£265,000

2 Gardens!!!!!!

Located on Bishop Close in Margate, this modern end of terrace house offers a delightful blend of comfort and style. Positioned at the end of a quiet close, the property benefits from an allocated parking space along with additional visitors' bays, ensuring convenience for both residents and guests.

Upon entering, you are welcomed into a spacious and well-presented lounge, featuring elegant hardwood flooring and a charming wood panel feature wall that adds character to the space. This inviting area is perfect for relaxation or entertaining guests.

The modern kitchen/diner is a true highlight, boasting patio doors that open out to a sunny and generously sized rear garden, complete with an astro turf lawn and gate leading to further garden which is lawned and has storage shed and double gates to the front. This outdoor space is ideal for enjoying the warmer months, whether for family gatherings or simply soaking up the sun.

The property comprises three bedrooms, including two well-proportioned double rooms and a single bedroom. The largest double bedroom benefits from an ensuite shower room, providing added privacy and





convenience. Additionally, a family bathroom serves the other bedrooms, ensuring ample facilities.

This charming home in Margate is perfect for families or those seeking a peaceful retreat while remaining close to the local amenities of Westwood Cross. With its modern features and inviting atmosphere, it is a property not to be missed.

Council Tax Band C

Freehold

Maintenance Approx £250pa

Mains water, sewer, electricity, gas with gas central heating

Fixed wireless broadband





GUILDCREST ESTATES

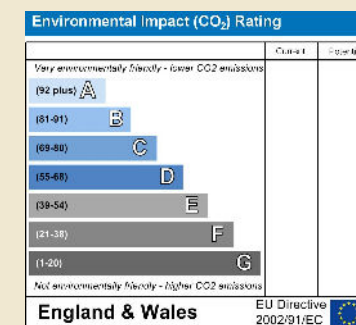
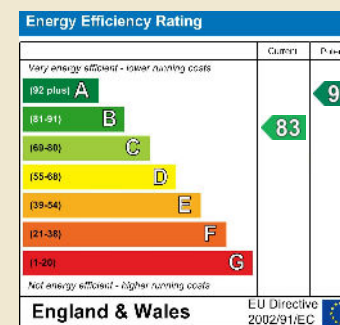
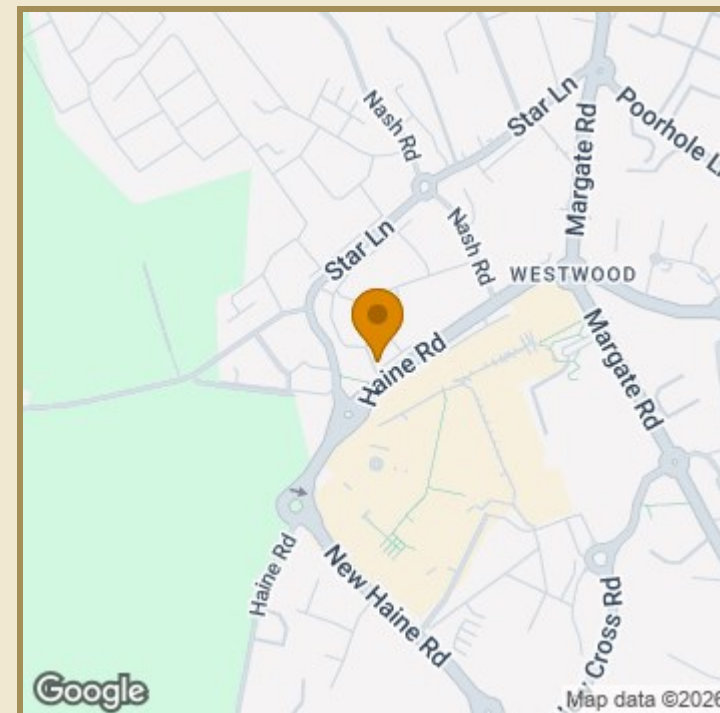
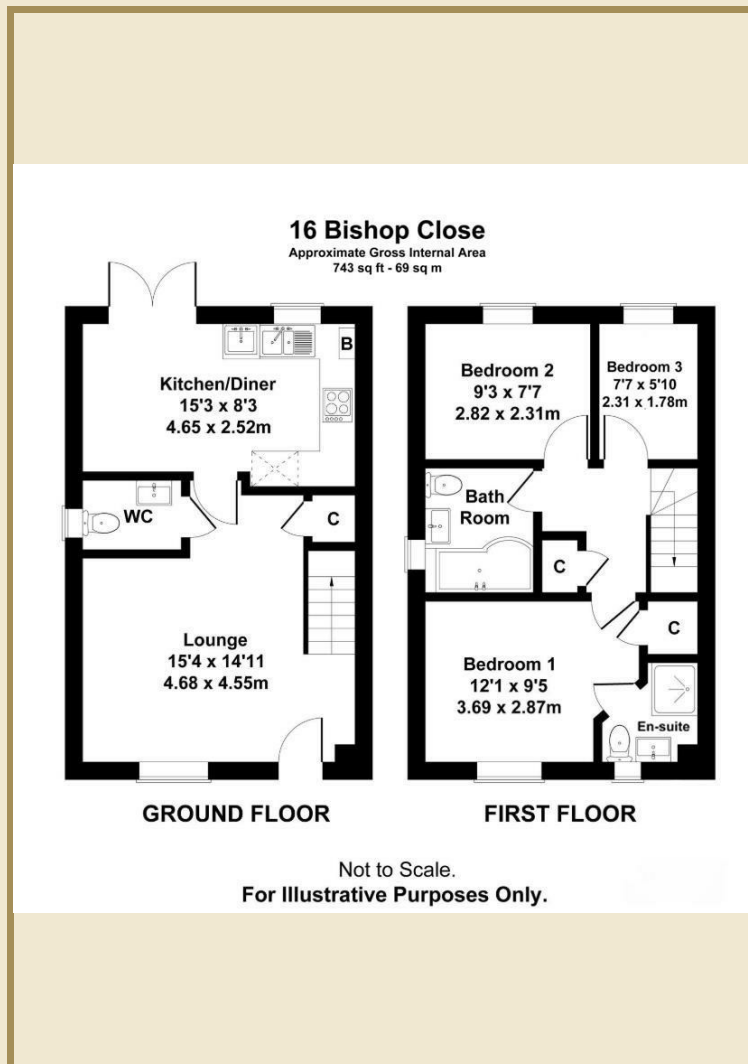
Key Features

- Modern end of terrace house positioned at the end of a quiet close
- Spacious and well-presented lounge
- Modern kitchen/diner with patio doors
- 2 GARDENS!!
- Three bedrooms, including two doubles and a single
- Ensuite shower room, family bathroom and downstairs toilet
- Close to the local amenities of Westwood Cross
- Allocated parking space and additional visitors' bays

Important Information

Freehold
House - End Terrace
743.00 sq ft
Council Tax Band C
EPC Rating B

£265,000



01843 272200 www.guilcrestestates.co.uk

1 The Laurels, Manston Business Park, Ramsgate, Kent CT12 5NQ



Guilcrest Estates Ltd. Registered Office 1 Percy Road, Broadstairs, Kent CT10 3LB Company Number: 13138084 Registered in England & Wales | VAT Number: 374 4288 71

Disclaimer These particulars, whilst believed to be accurate are set out as a general outline only for guidance and do not constitute any part of an offer or contract. Intending purchasers should not rely on them as statements of representation of fact, but must satisfy themselves by inspection or otherwise as to their accuracy. No person in this firm's employment has the authority to make or give any representation or warranty in respect of the property.